

# DESIGN ADVISORY GROUP #8 / OCTOBER 24, 2019

# INTRODUCTIONS



## PORTLAND PUBLIC SCHOOLS

Brian Oylear, Project Director

Jen Sohm, Project Design Manager

Jamie Hurd, Project Manager

Mark Kline, Construction Manager

## BASSETTI ARCHITECTS

Lorne McConachie, Principal

Joe Echeverri, Principal

Lydia Burns, Associate Principal

Dianna Montzka, Design

Lyndon Julien-Sehl, Design

Mariko Park, Interiors

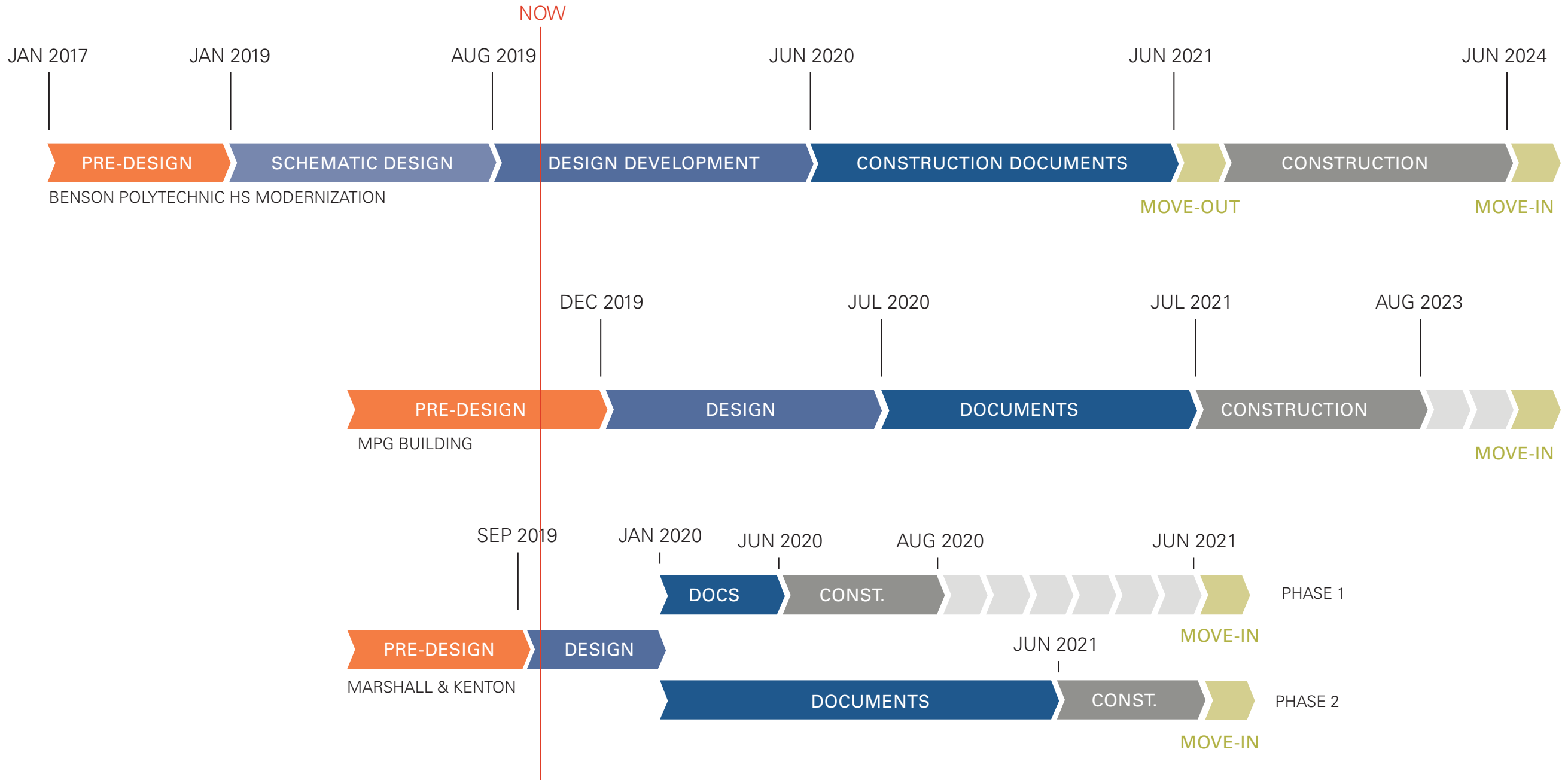
Amanda Lockwood, Interiors

# MARSHALL CAMPUS VISIT FEEDBACK



# PROJECT UPDATE /

# PROCESS SCHEDULE



# NOTABLE DESIGN REVISIONS

## BUILDING B REPLACEMENT

- + Cost savings for simplified structure, logistical efficiencies in construction
- + Enhanced program layouts compared to original shell

## EXTERIOR MATERIALS

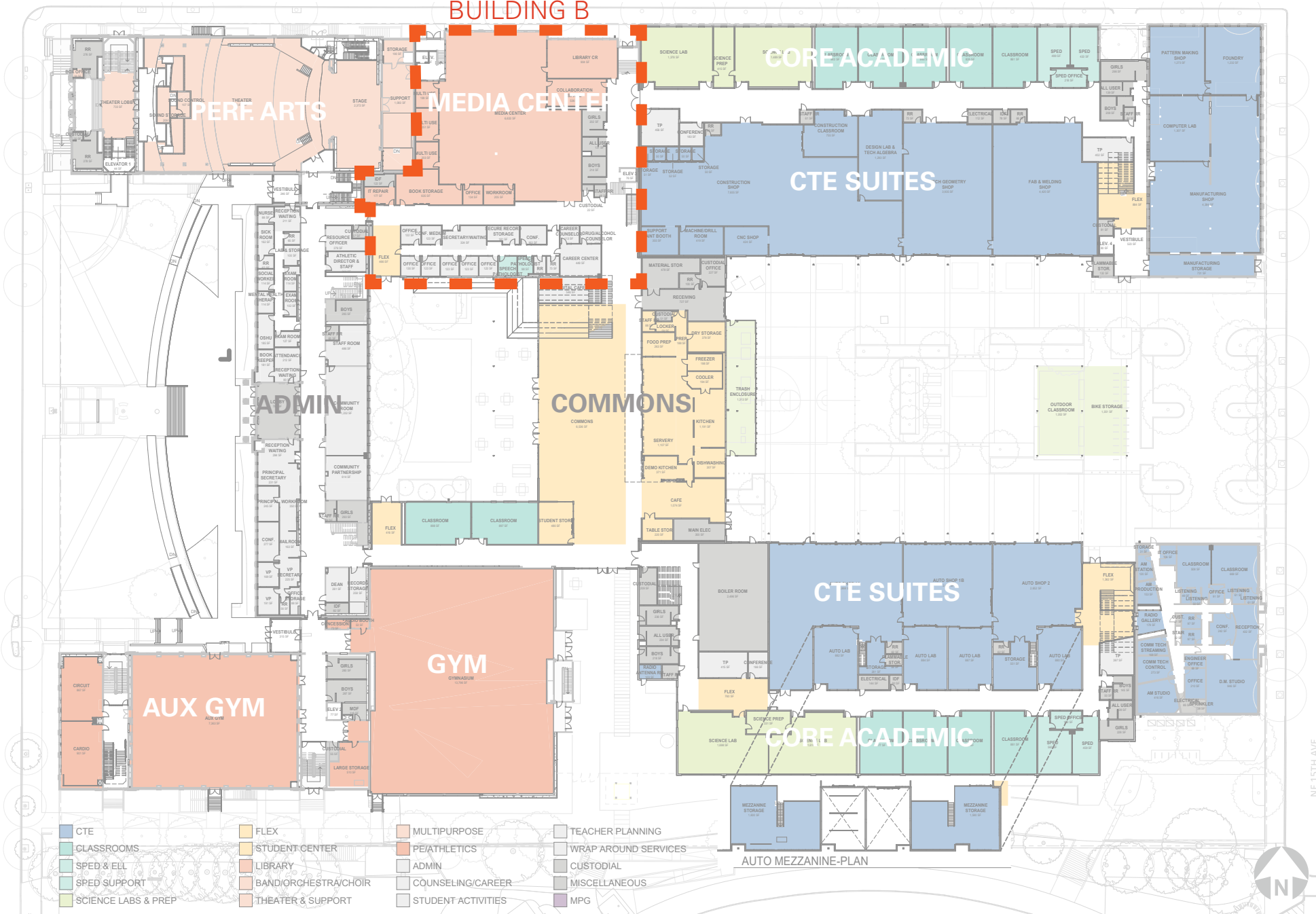
- + Address window patterns based on Portland Landmarks Commission feedback
- + Provide more relative scale and hand-craft of materials
- + Replace metal panel on new buildings with brick to be responsive to original materials and provide greater durability
- + Simplify gym building for a more cohesive south elevation

## WEST ENTRY COURTYARD

- + Updated with more sloped lawn to reduce retaining walls and railings

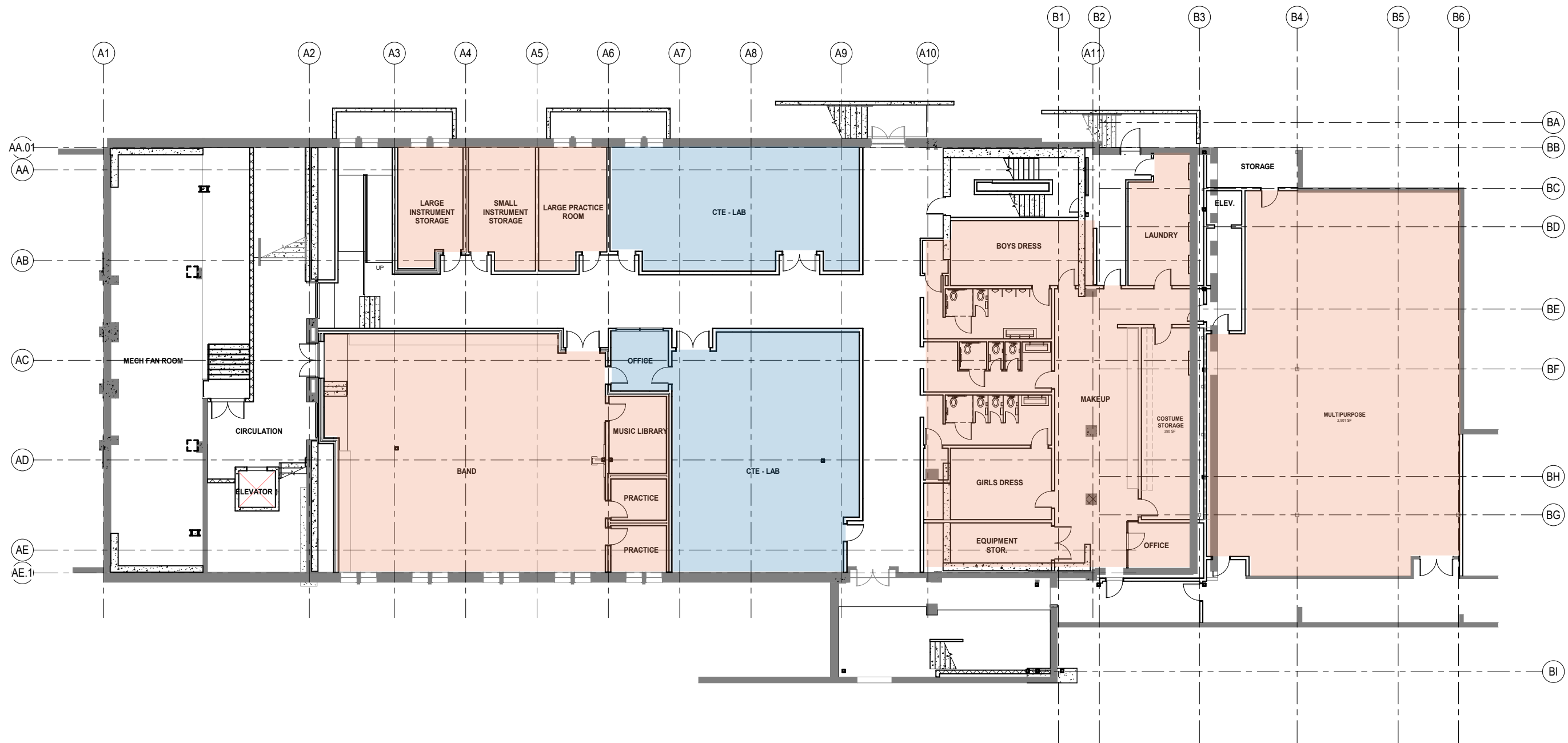
# FLOOR PLAN / LEVEL 1

BUILDING B



AUTO MEZZANINE-PLAN

# BUILDINGS A & B / CURRENT DESIGN - LOWER FLOOR



## LEGEND

- CTE
- BAND/PERFORMING ARTS



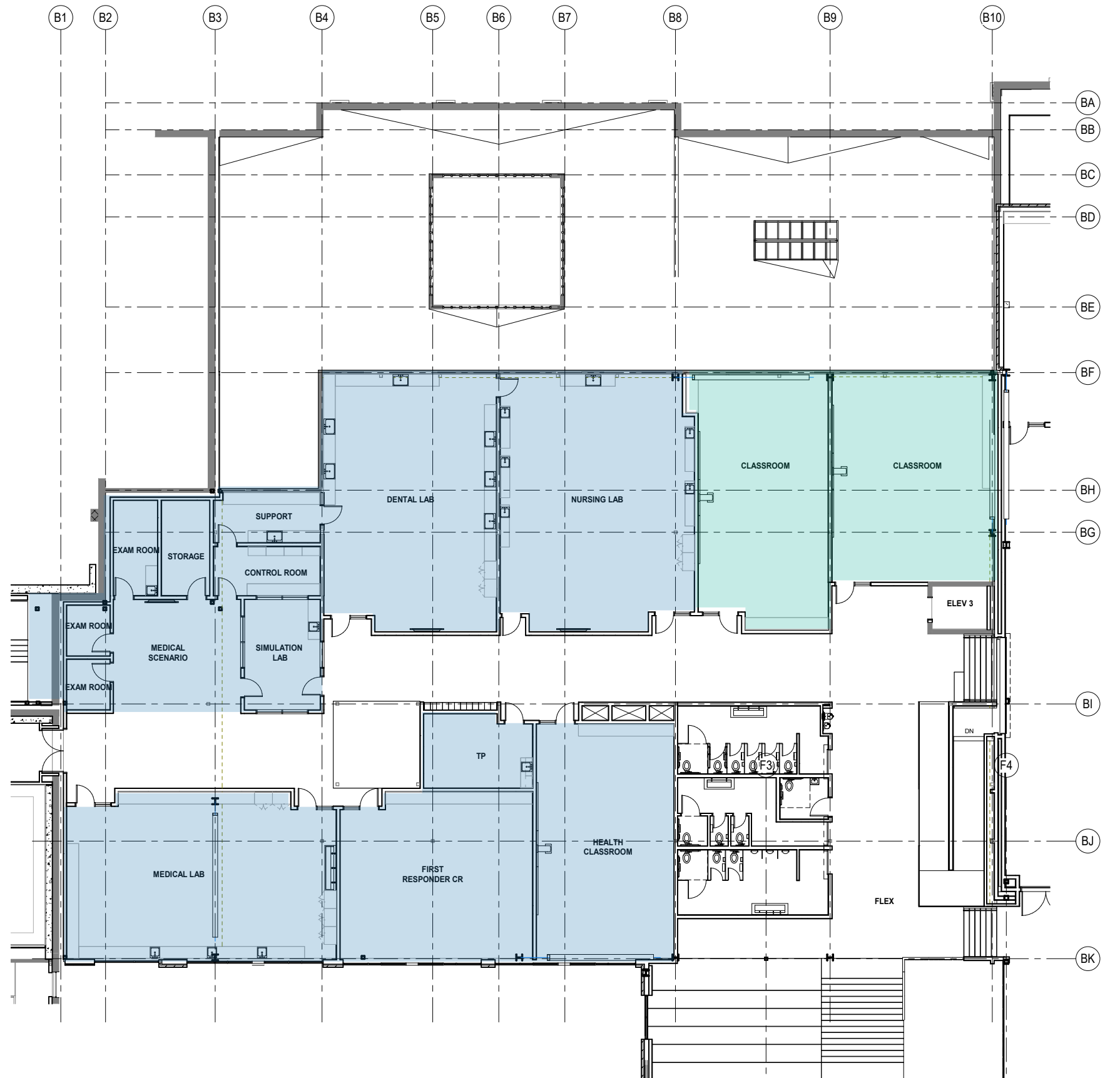
# BUILDING B / CURRENT DESIGN - GROUND FLOOR



## LEGEND

- LIBRARY/MEDIA CENTER
- SCIENCE LAB

# BUILDING B / CURRENT DESIGN - UPPER FLOOR



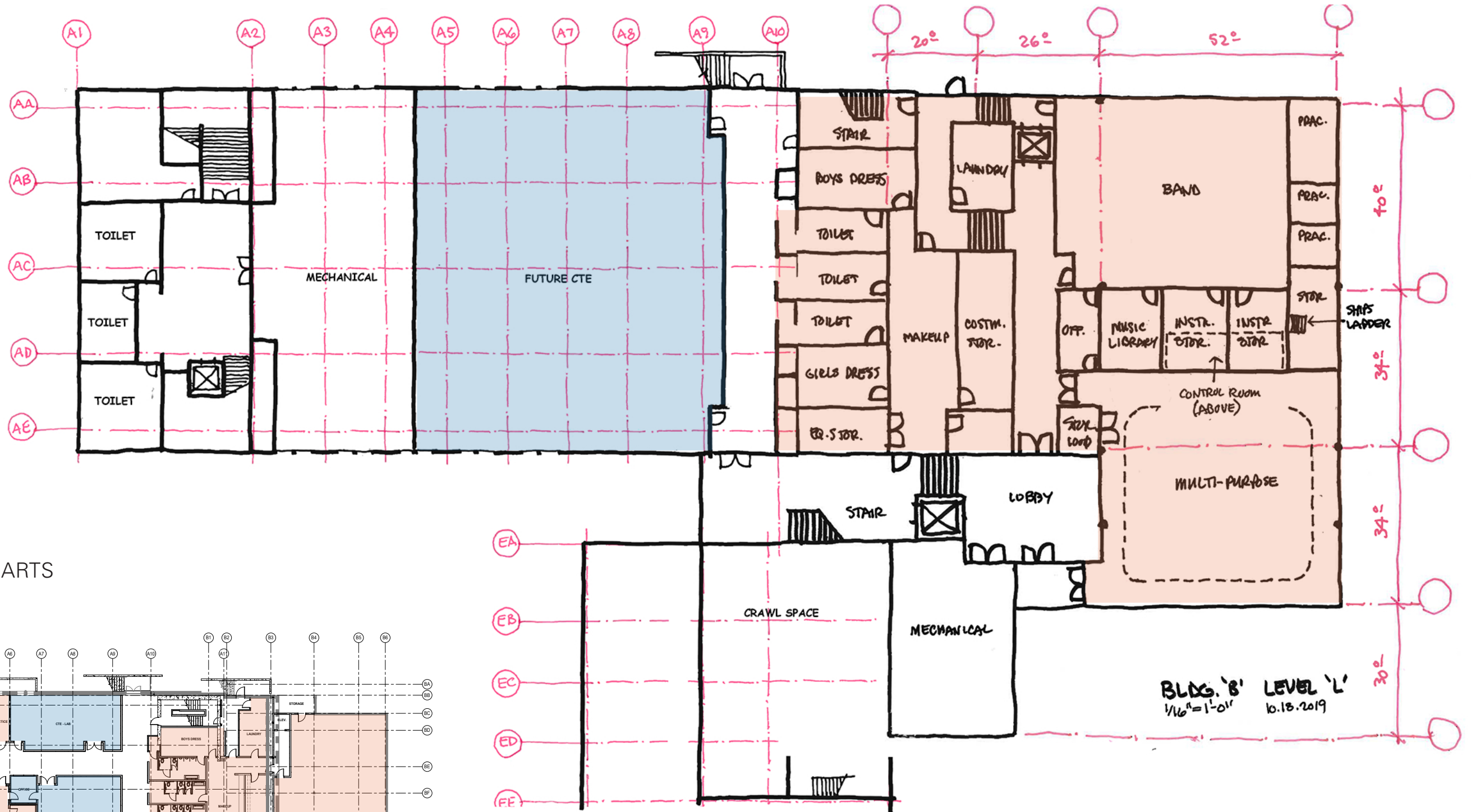
## LEGEND

- CTE
- GEN. ED.

# BUILDINGS A & B / NEW CONSTRUCTION - LOWER FLOOR

## BENEFITS

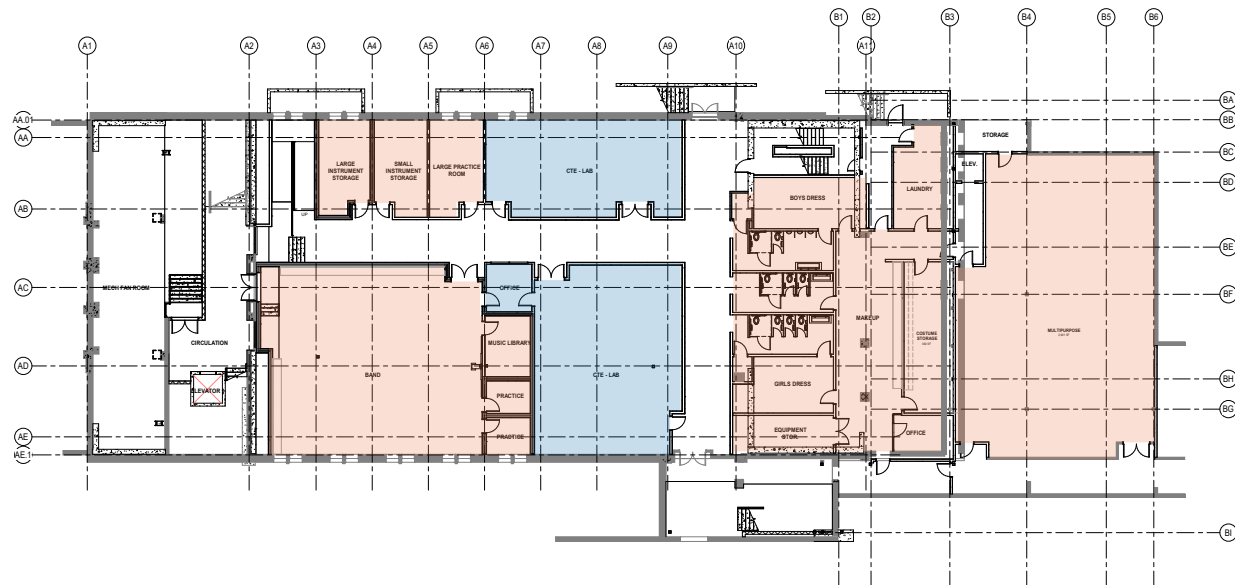
- + More adequate space and ceiling height for performing arts spaces
- + Eliminated free standing columns in performing arts spaces
- + Enlarged CTE Suite
- + Reduced structural impacts to Auditorium lower level



## LEGEND

- CTE
- BAND/PERFORMING ARTS

## CURRENT DESIGN



# BUILDING B / NEW CONSTRUCTION - GROUND FLOOR

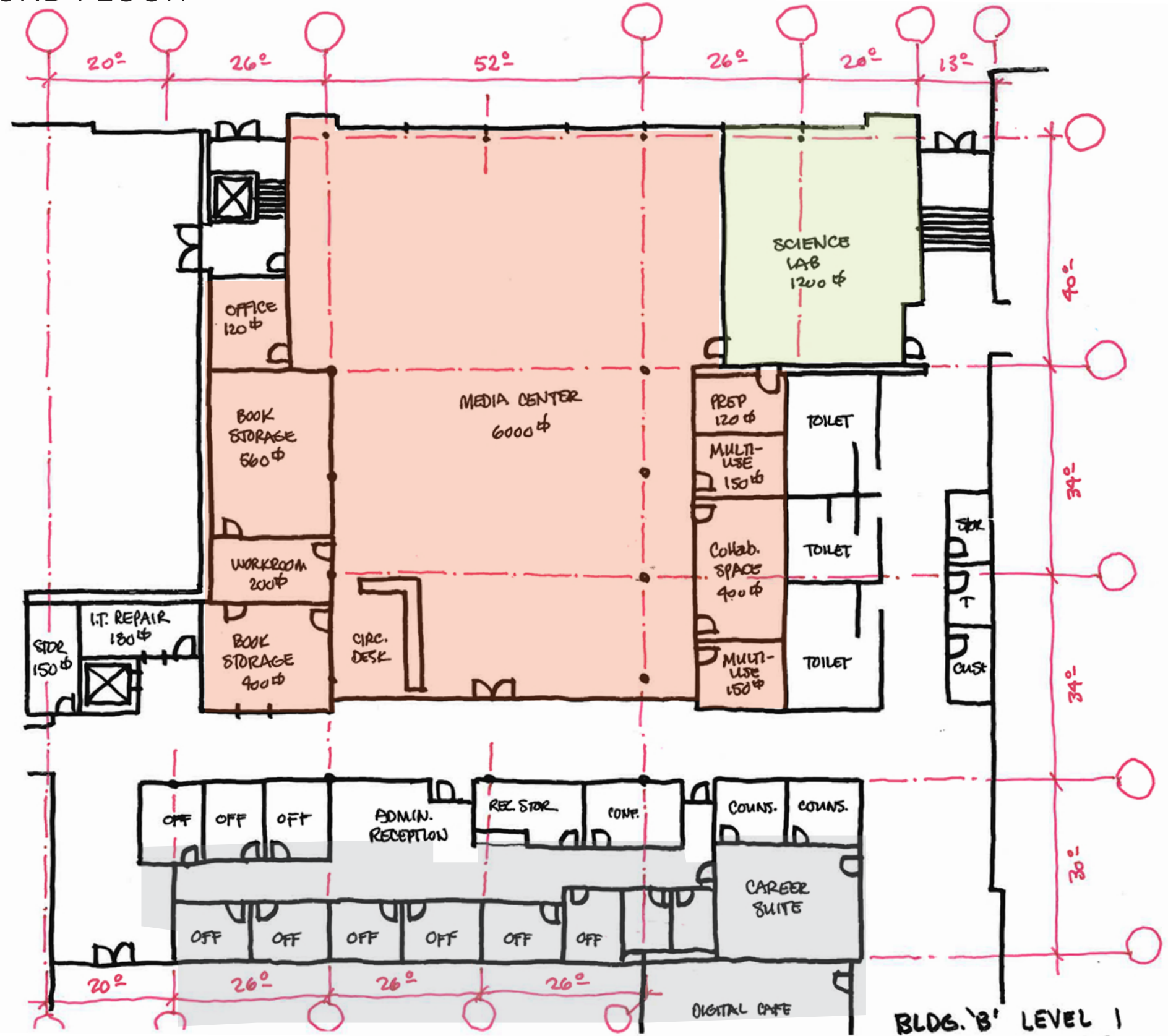
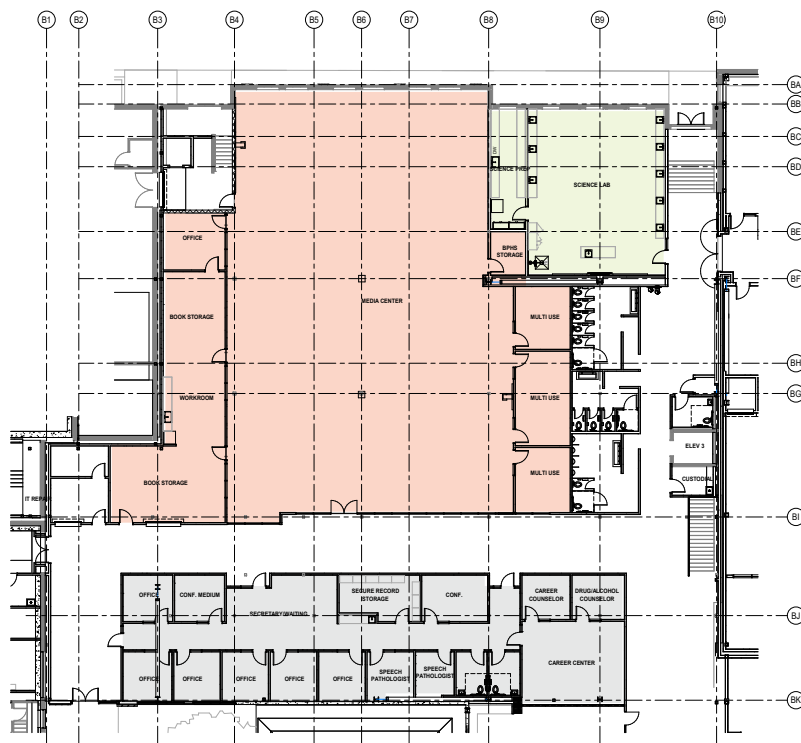
## BENEFITS

- + Relocated elevator
- + More freedom in layout - reduced columns, simplified exterior wall footprint

## LEGEND

- LIBRARY/MEDIA CENTER
- SCIENCE LAB

## CURRENT DESIGN



# BUILDING B / NEW CONSTRUCTION - UPPER FLOOR

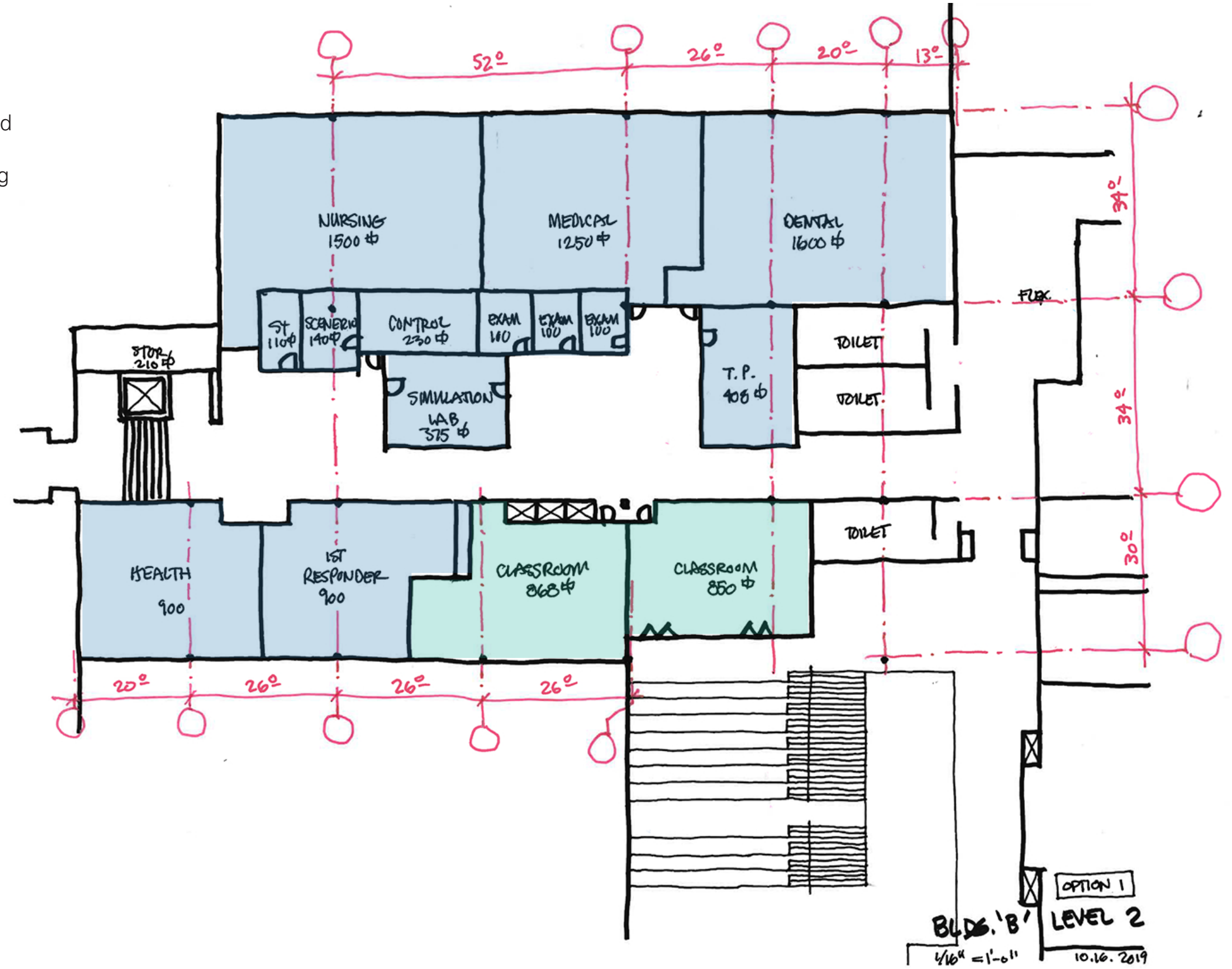
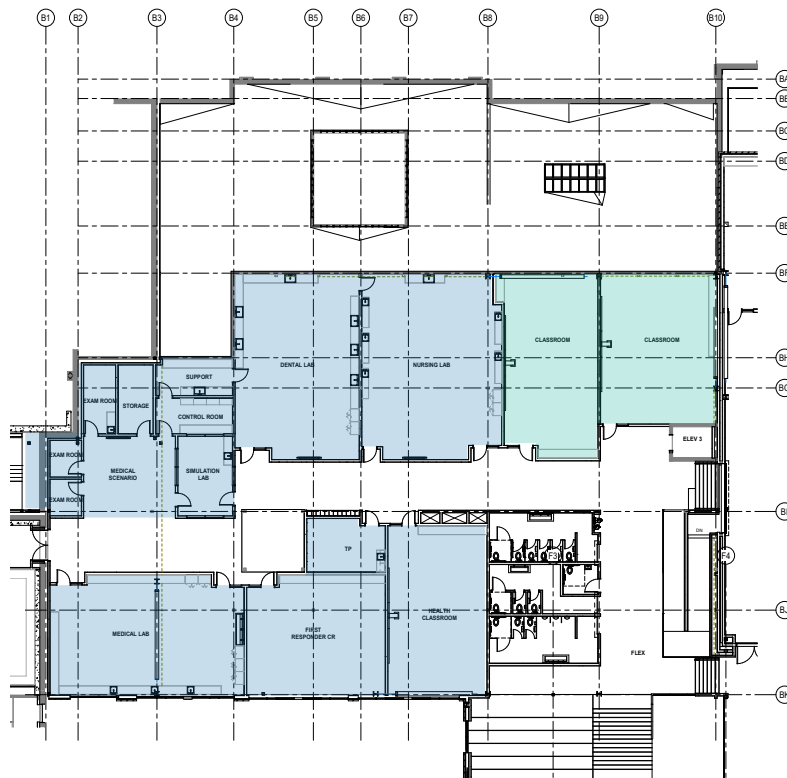
## BENEFITS

- + Increased daylighting for learning spaces
- + Relocated elevator
- + More freedom in layout - reduced columns, simplified exterior wall footprint
- + More opportunity for roof access for outdoor learning

## LEGEND

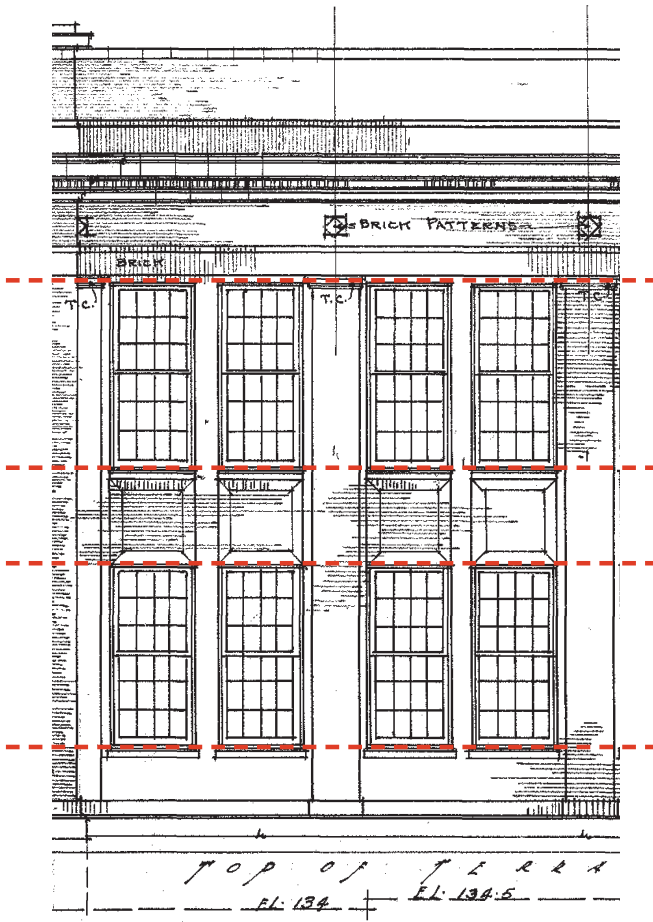
- CTE
- GEN. ED.

## CURRENT DESIGN

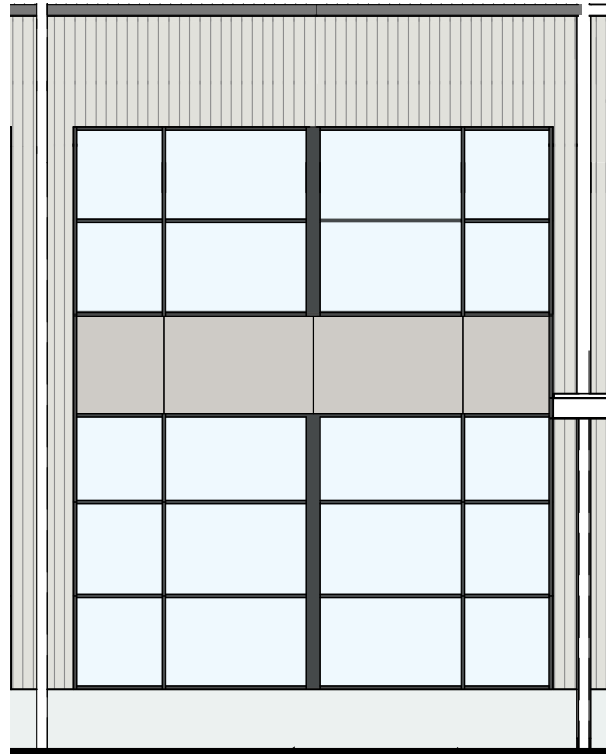


# WINDOW PATTERNS / UPDATE

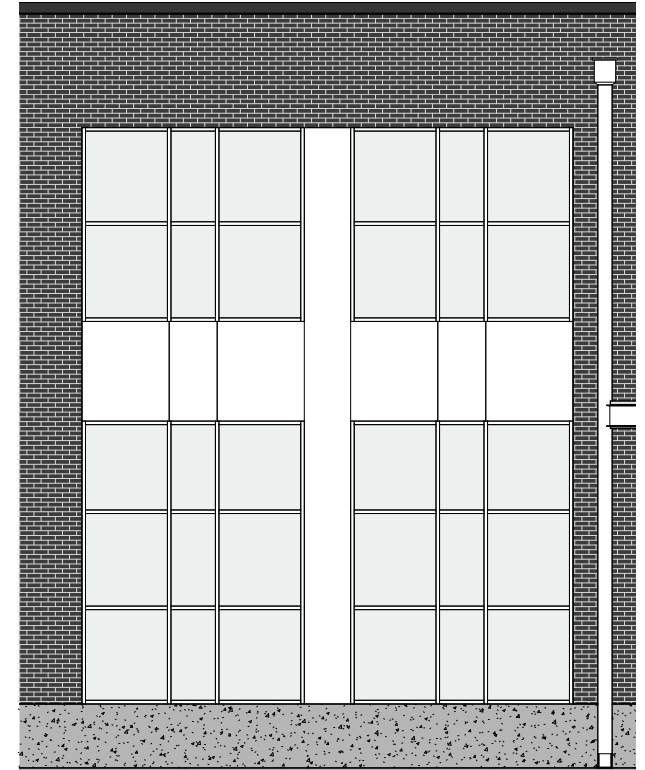
EXISTING WINDOWS



INITIAL DESIGN

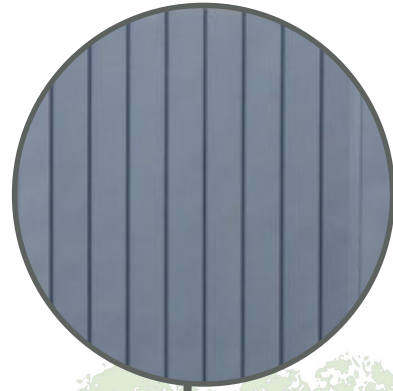


REVISED DESIGN

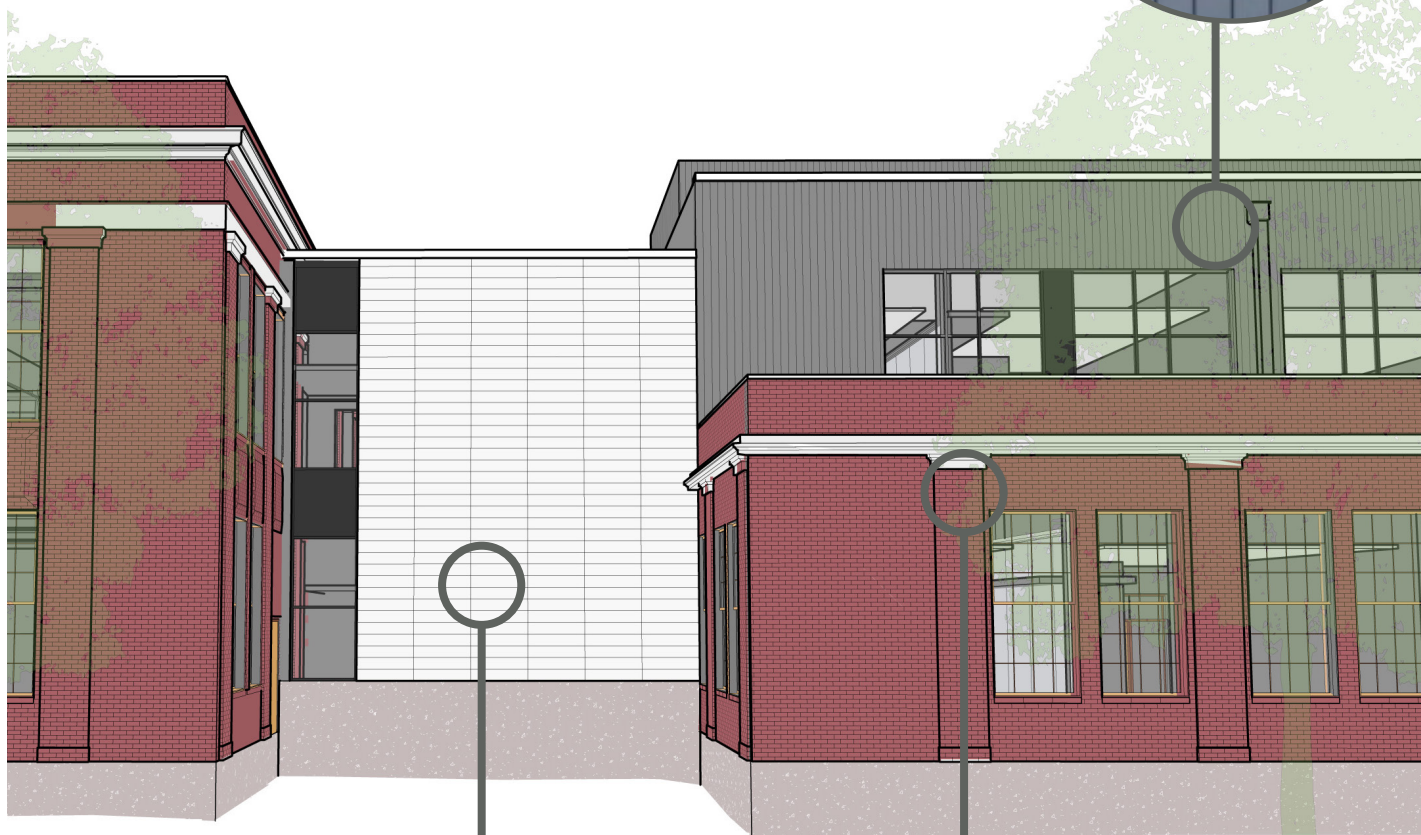


EXTERIOR FINISHES / REVISED APPROACH

METAL PANEL



BUILDING C SOUTH ELEVATION - IRVING GASKET - METAL PANEL



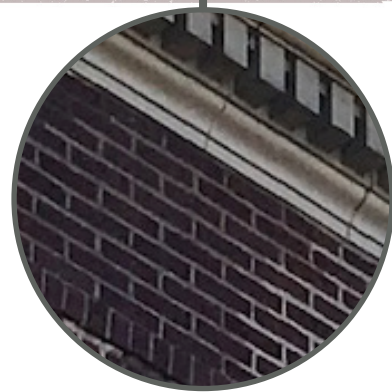
FLASHED BRICK



BUILDING C SOUTH ELEVATION - IRVING GASKET - BRICK



TERRA COTTA  
RAIN SCREEN



EXISTING BRICK &  
TERRA COTTA

# VIEW OF SOUTH WING FROM CTE COURTYARD



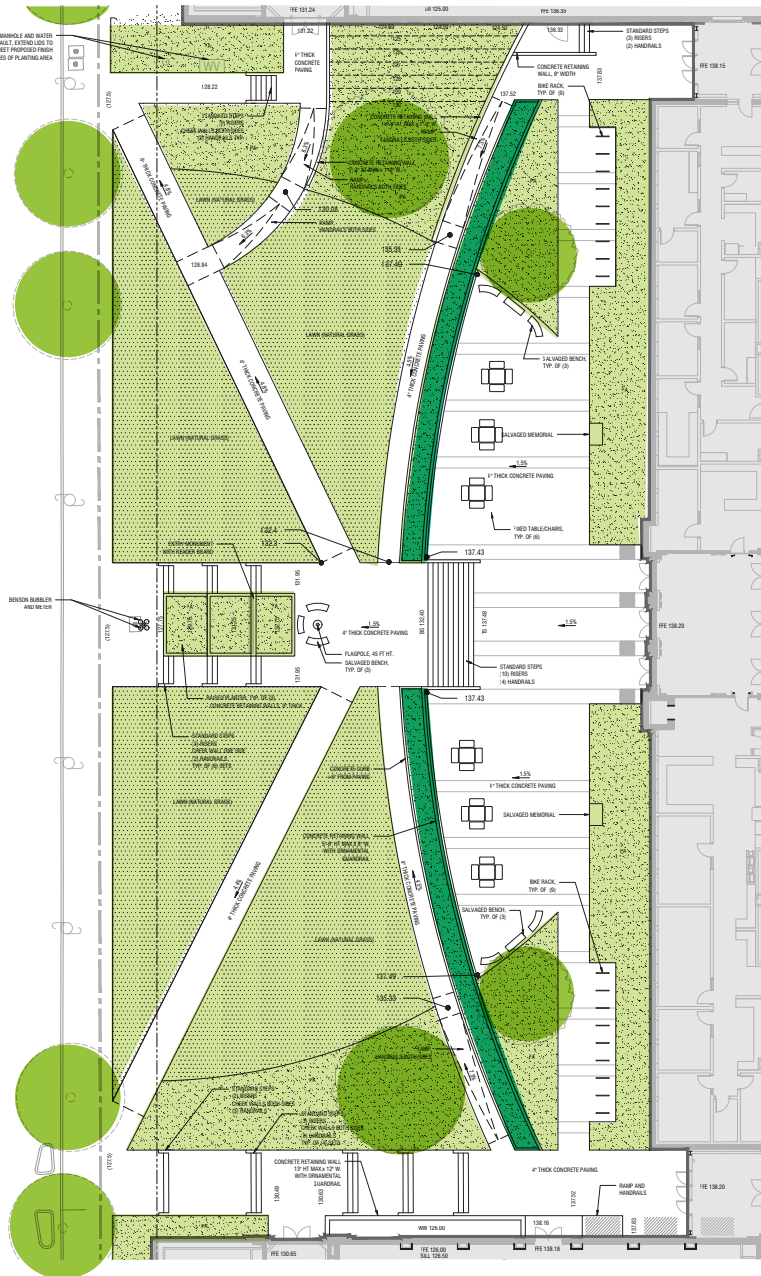


# VIEW OF NORTH WING FROM CTE COURTYARD

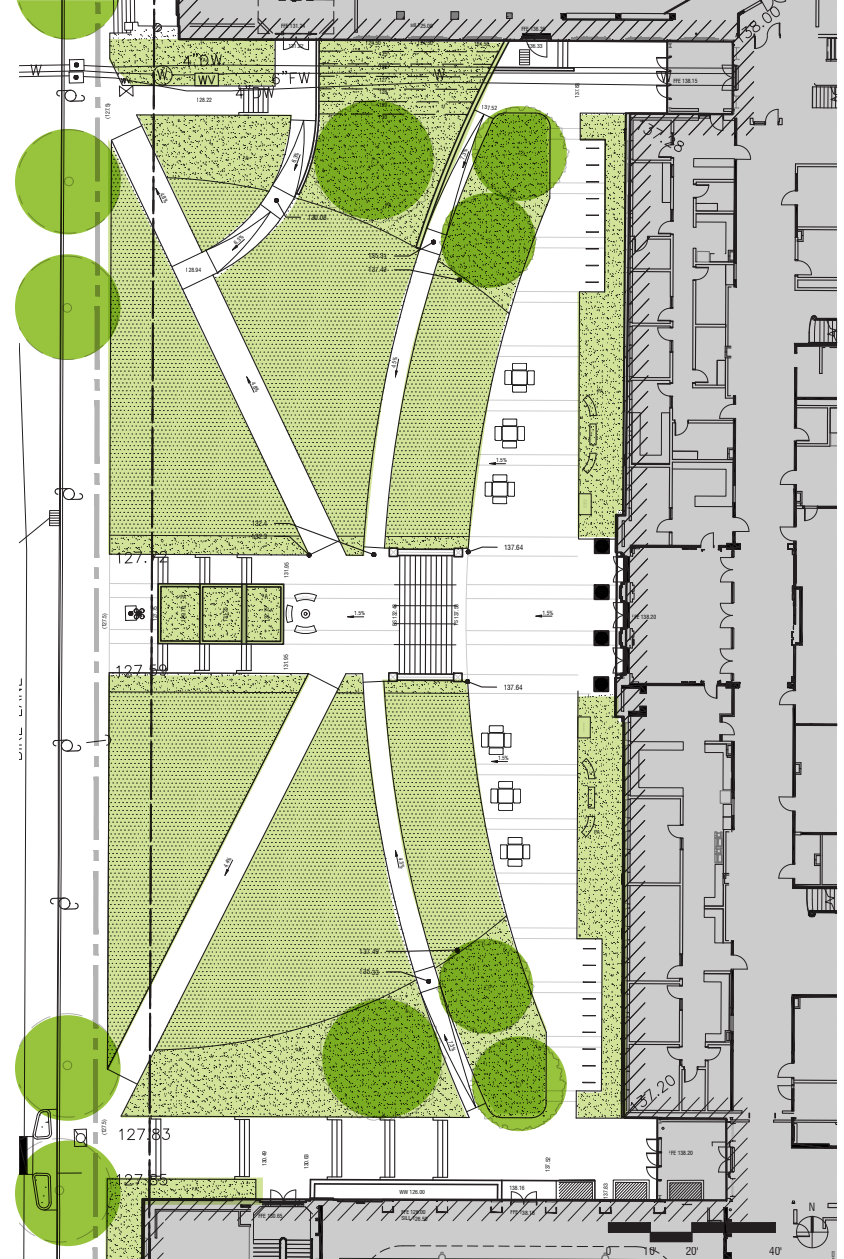


# WEST COURTYARD / HISTORIC FRONT ENTRY

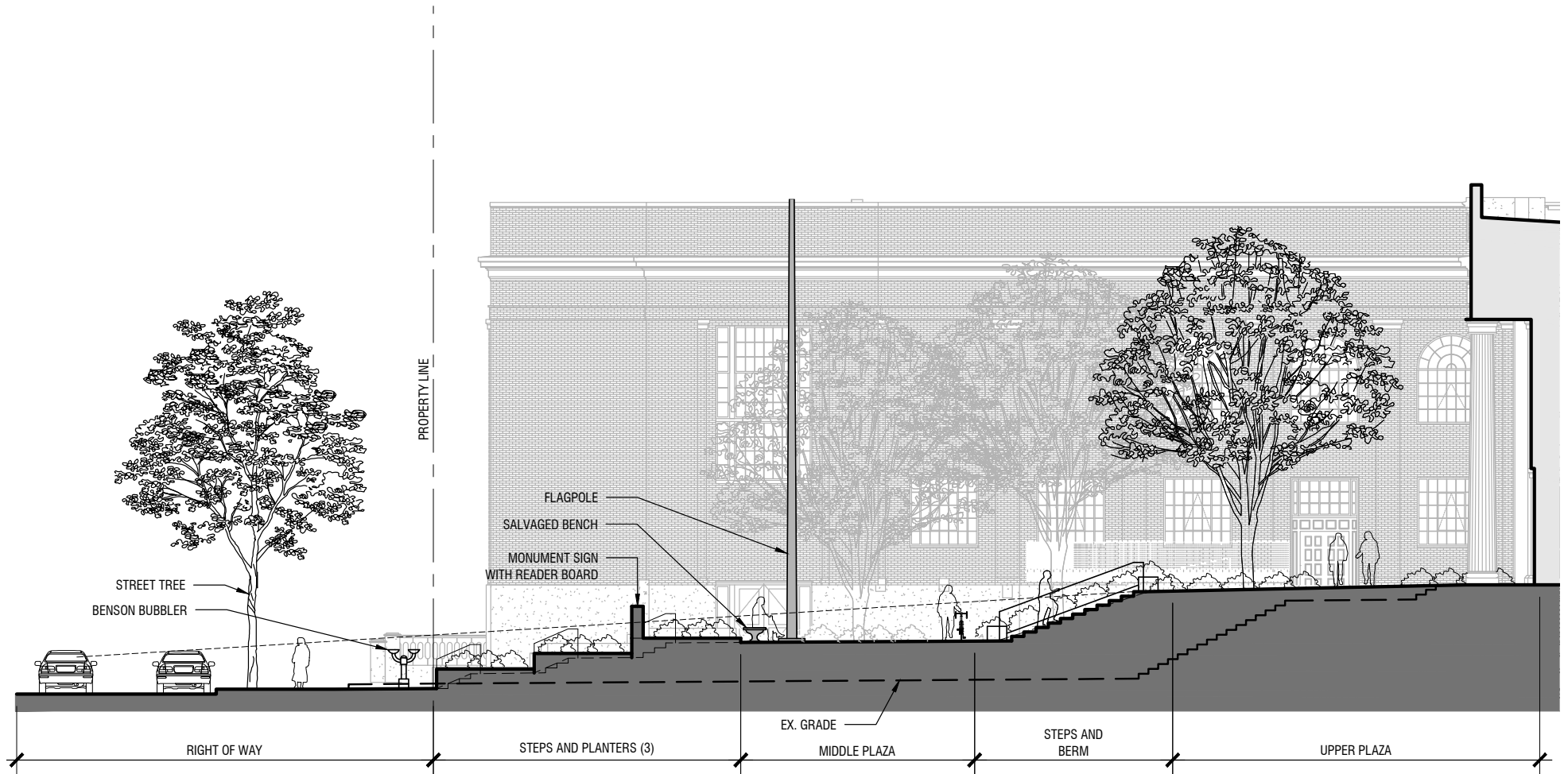
## INITIAL DESIGN



## REVISED DESIGN



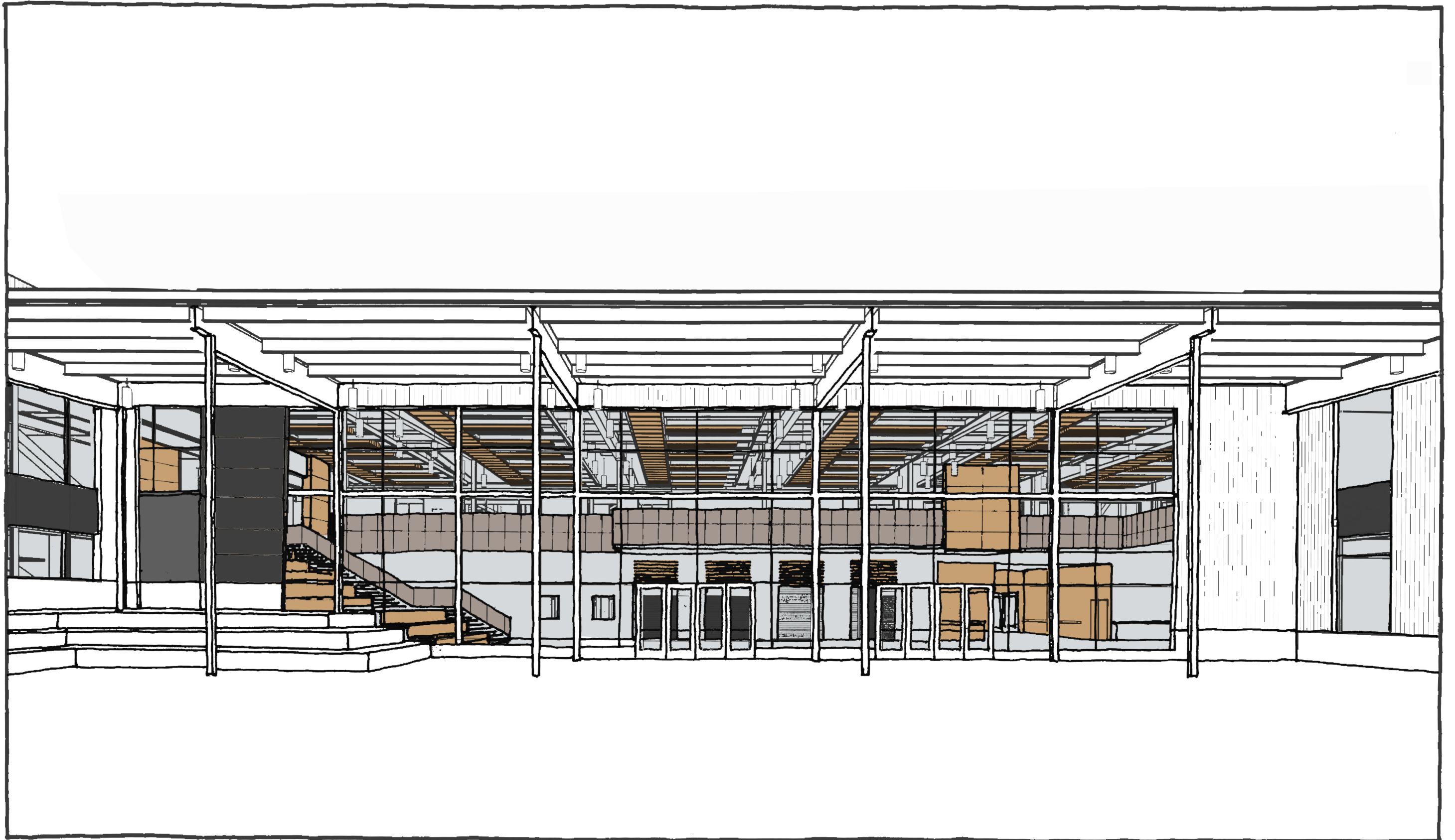
# WEST COURTYARD / HISTORIC FRONT ENTRY



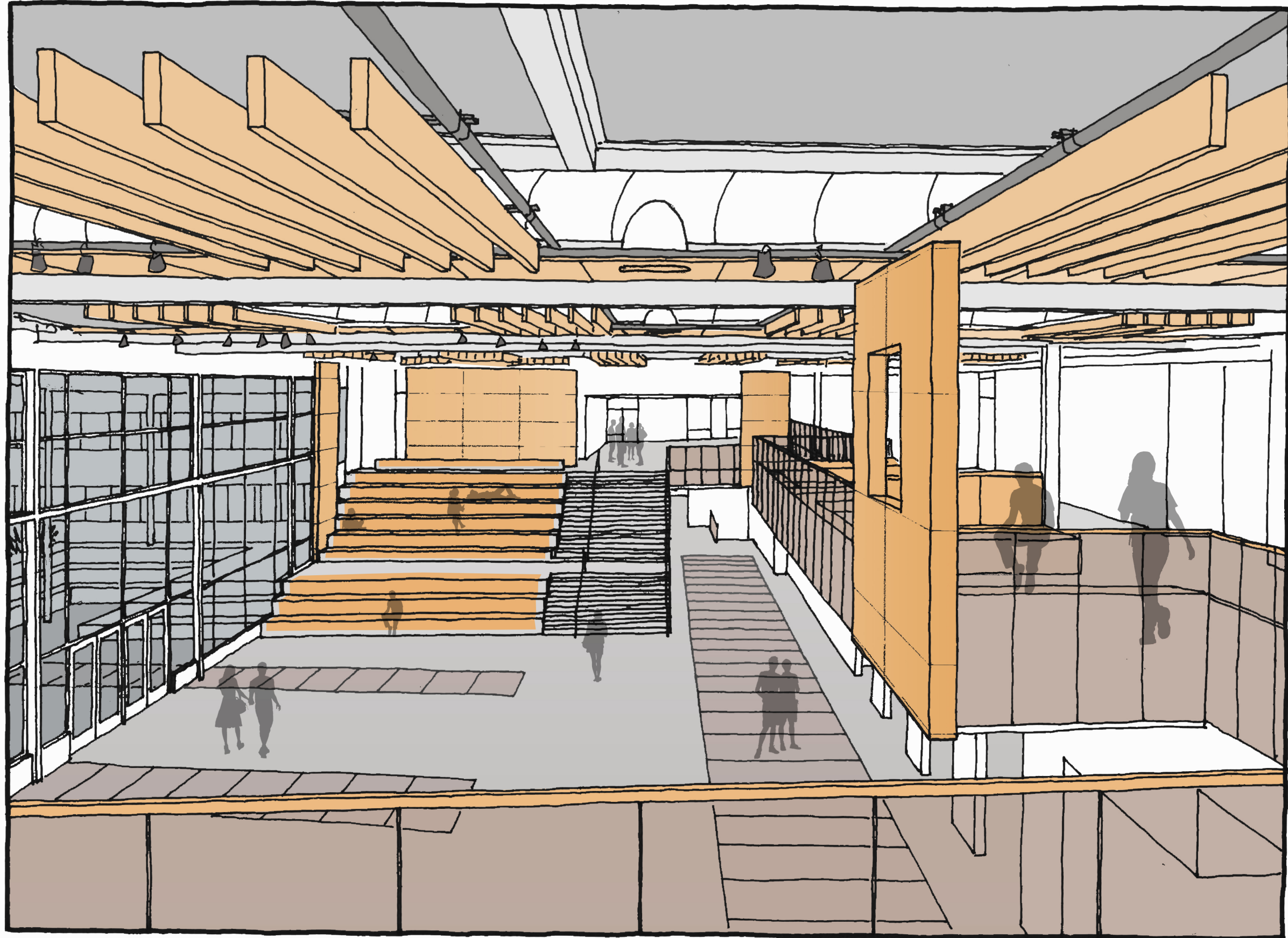
# INTERIOR FINISHES /

# SCHEMATIC DESIGN WALKTHROUGH /

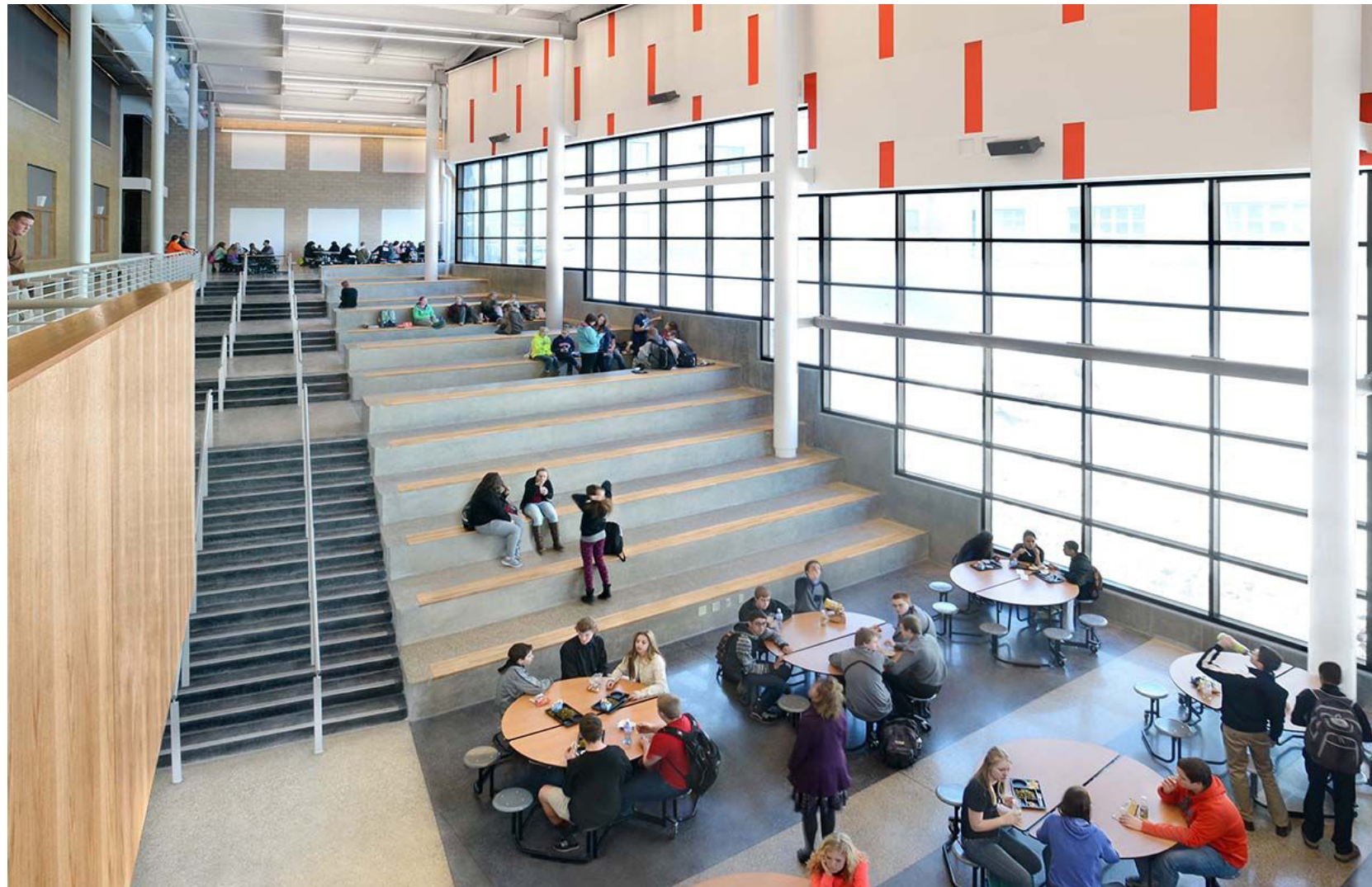




INTERIOR FINISHES / COMMONS



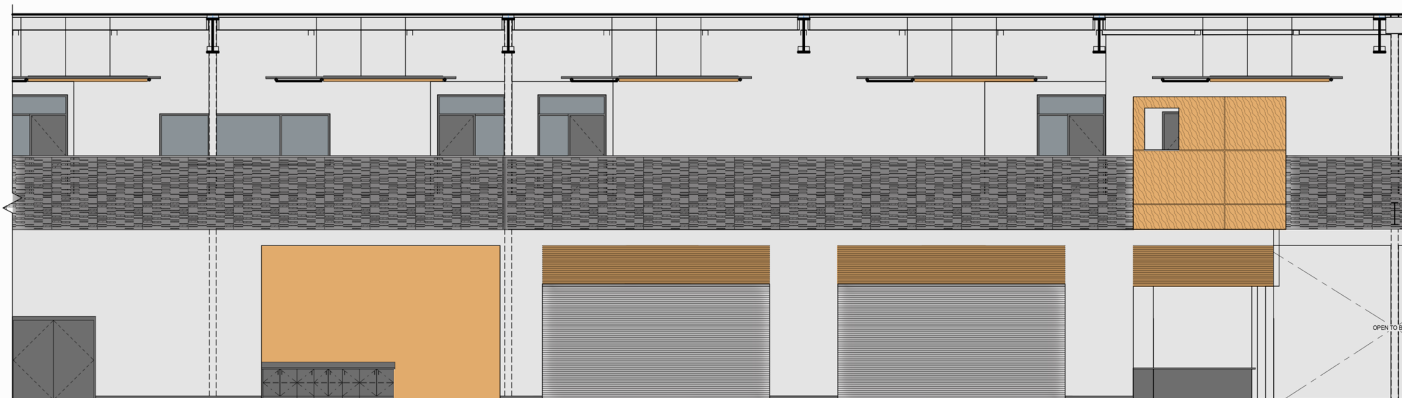
# INTERIOR FINISHES / COMMONS



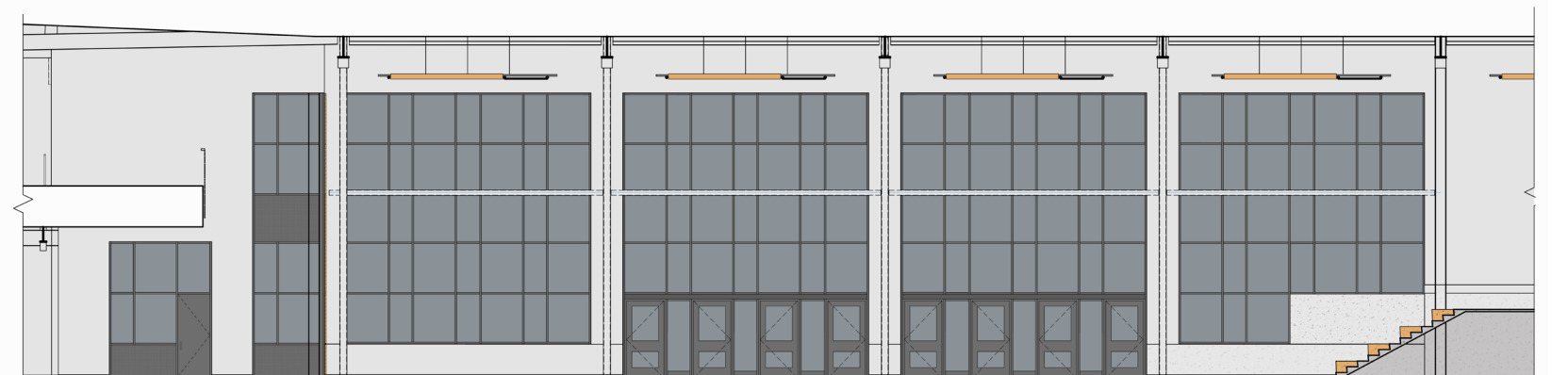
NATRONA COUNTY HIGH SCHOOL



UPPER COMMONS NORTHWEST VIEW



EAST ELEVATION - COMMONS



WEST ELEVATION - COMMONS



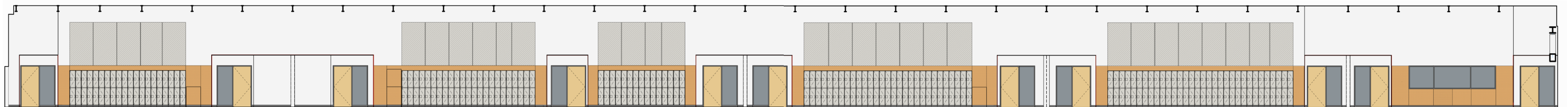
# INTERIOR FINISHES / CORRIDORS



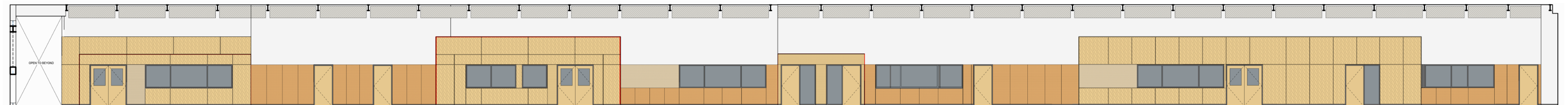
CORRIDOR NORTHEAST VIEW FROM FLEX



CORRIDOR & FLEX SOUTHEAST VIEW



NORTH ELEVATION - BUILDING C CORRIDOR

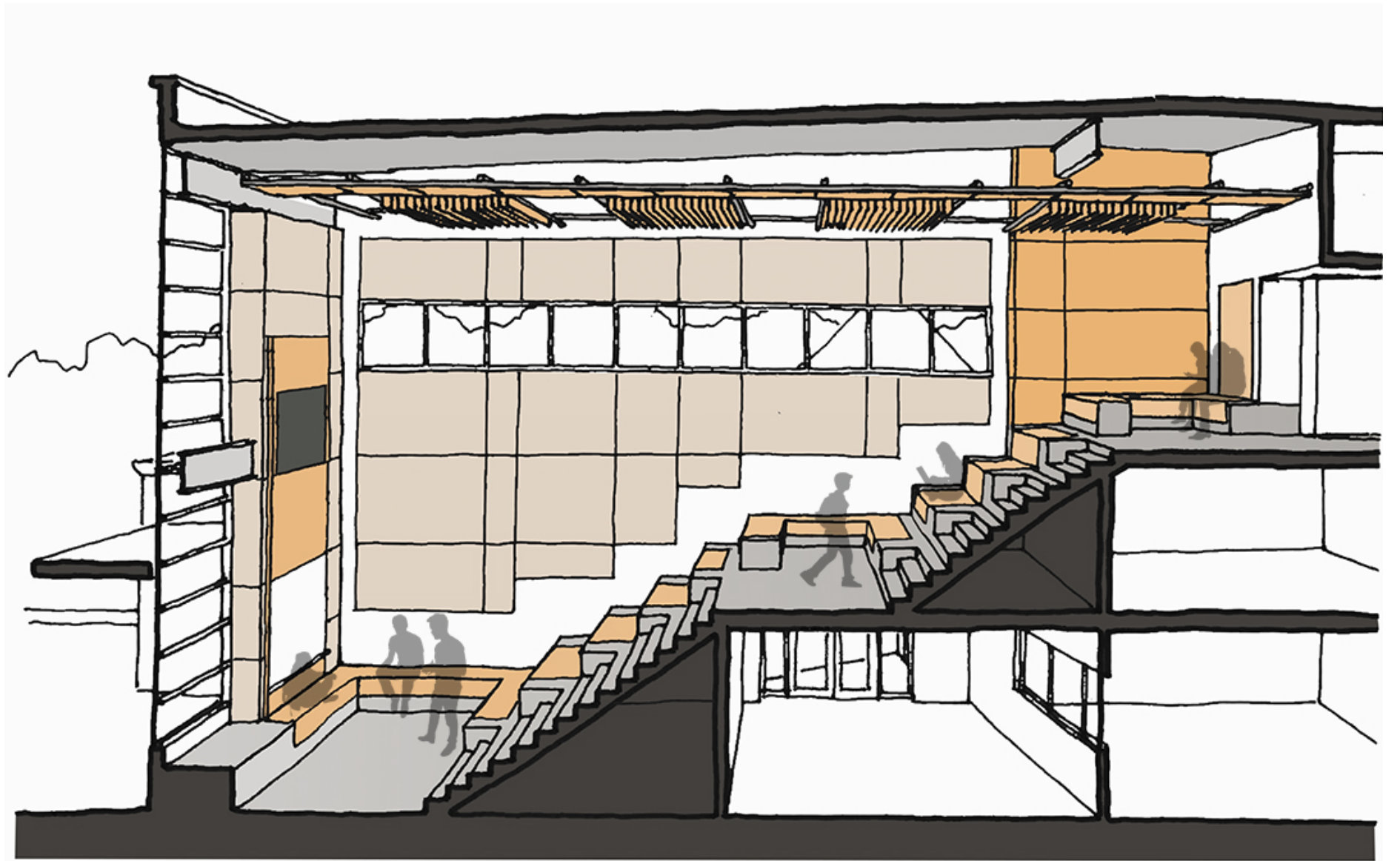


SOUTH ELEVATION - BUILDING C CORRIDOR

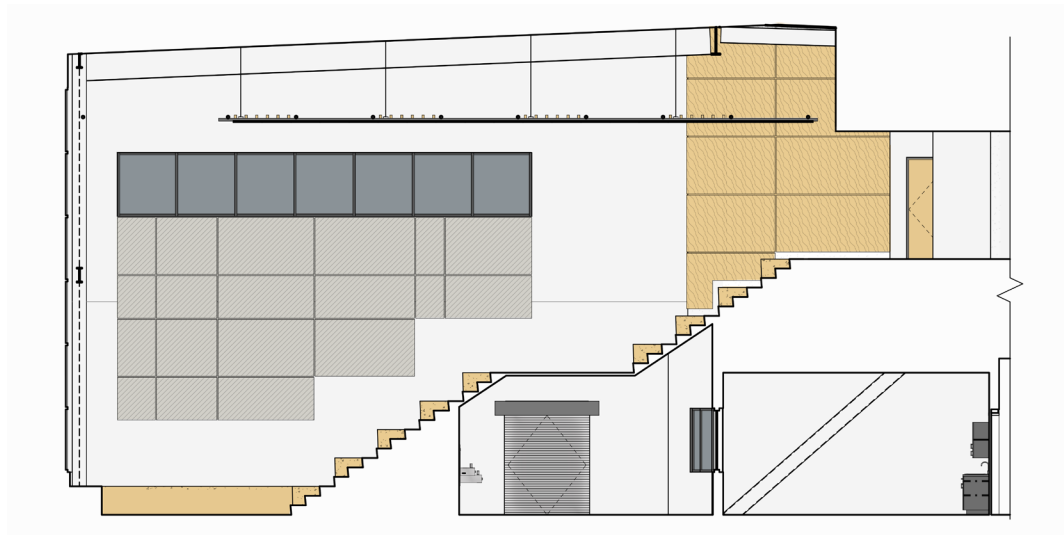
# INTERIOR FINISHES / FLEX AREAS



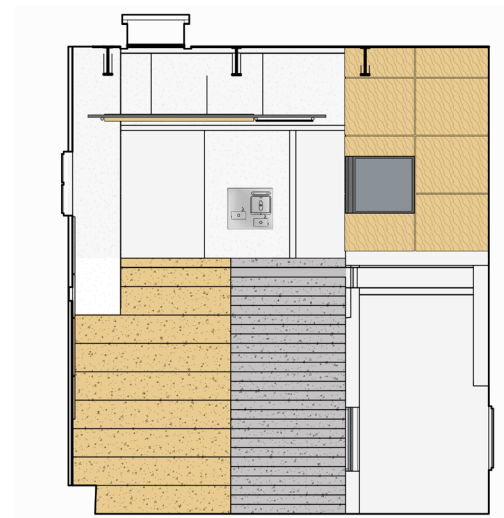
DWIGHT-ENGLEWOOD SCHOOL HAJJAR STEM SCHOOL, GENSLER



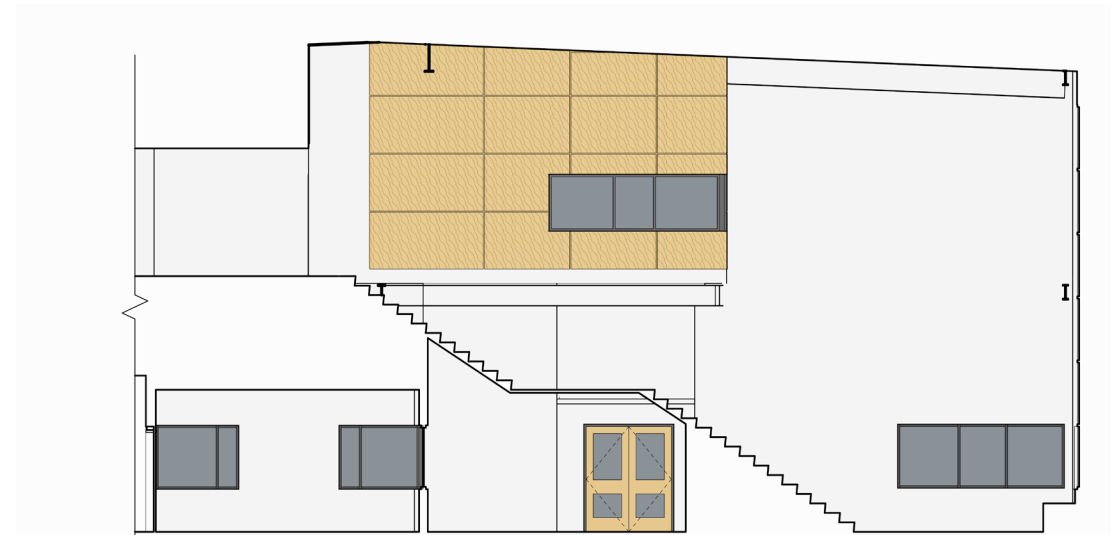
SOUTH FLEX AREA EAST SECTION



EAST ELEVATION - SOUTH FLEX

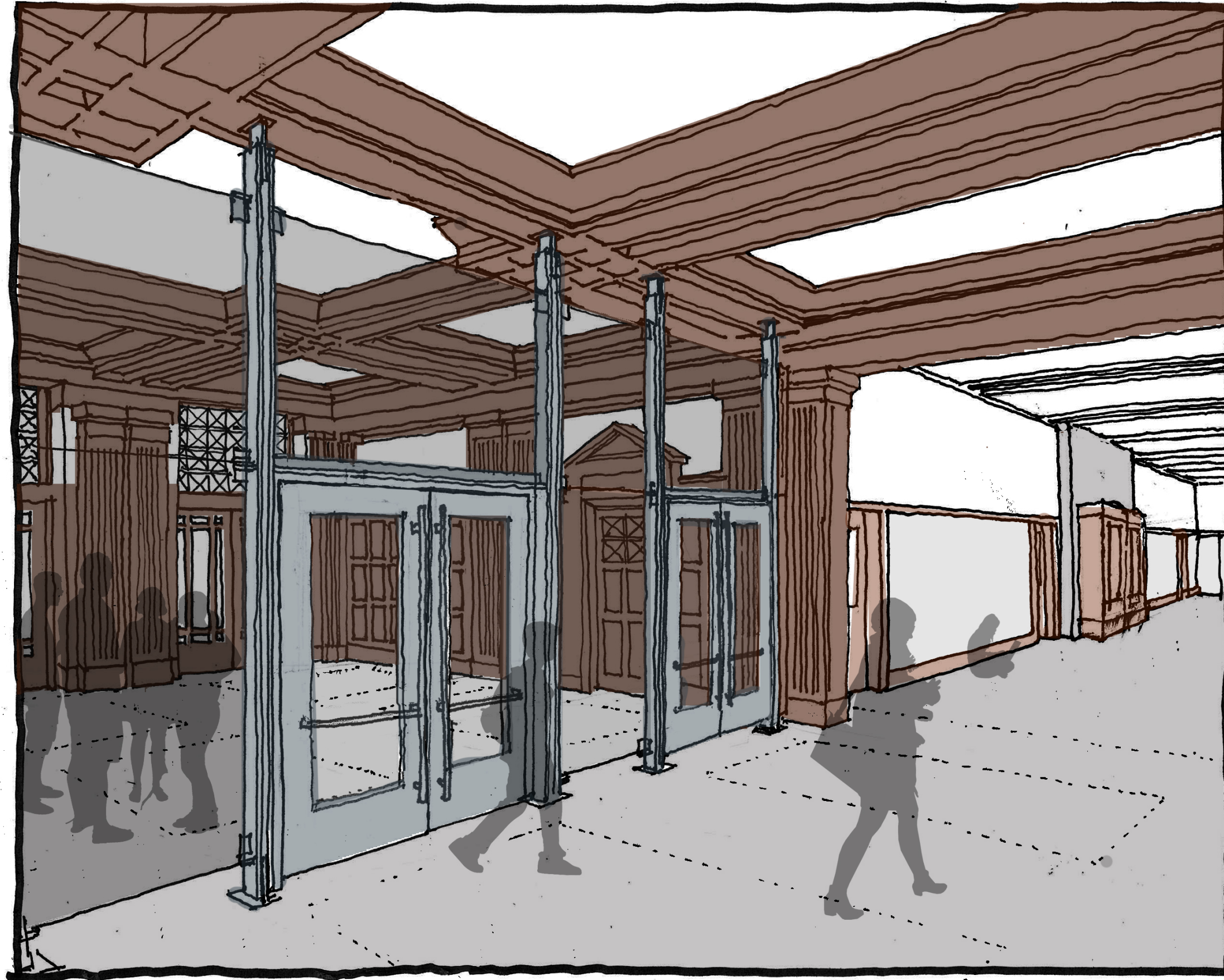


SOUTH ELEVATION - SOUTH FLEX

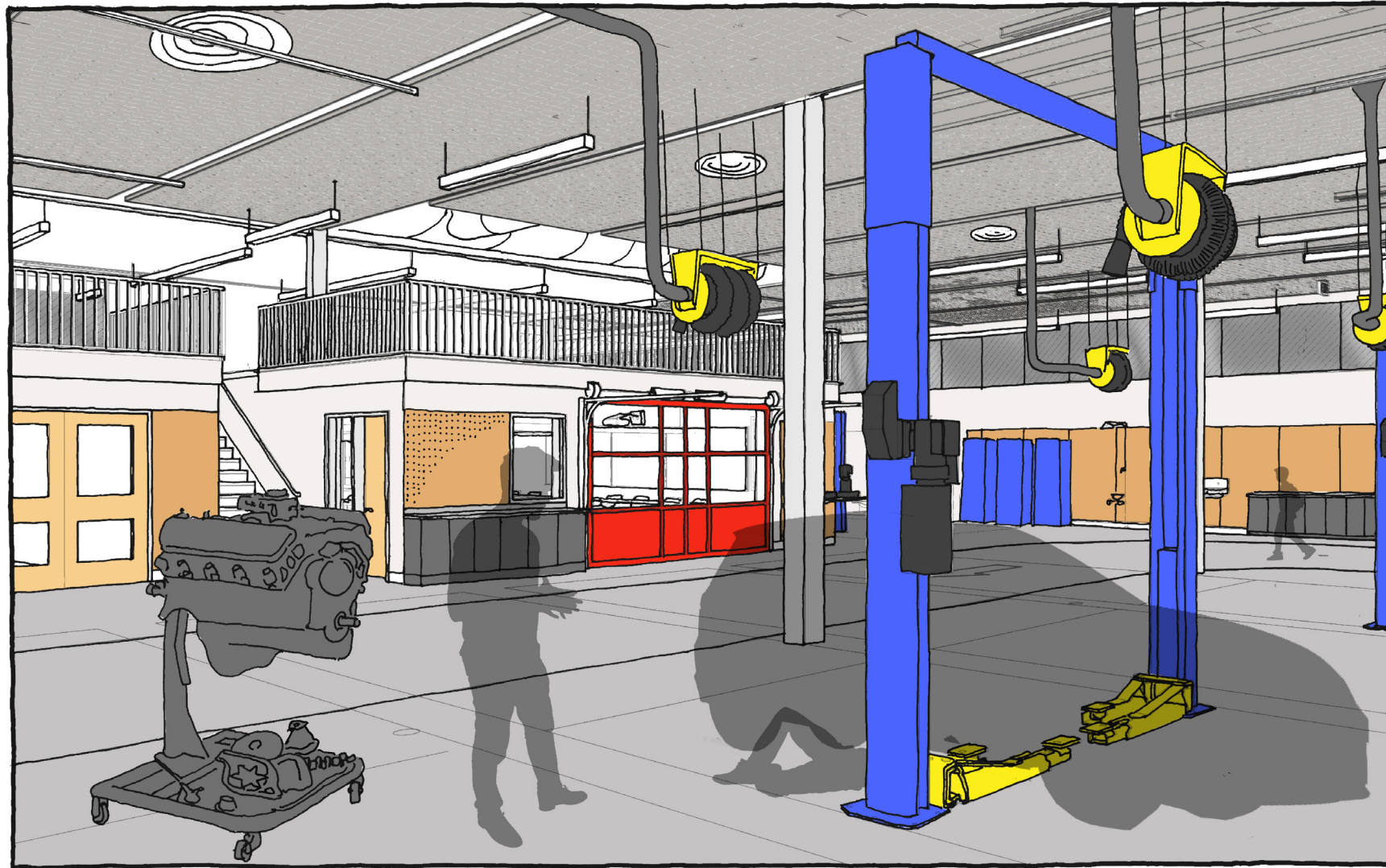


WEST ELEVATION - SOUTH FLEX

INTERIOR FINISHES / HISTORIC ENTRY



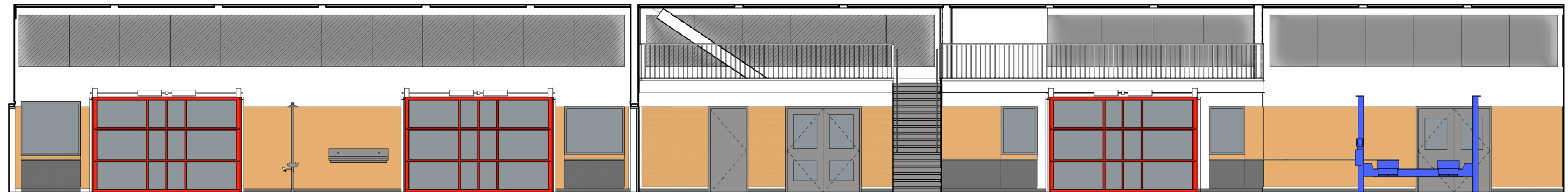
# INTERIOR FINISHES / CTE SHOPS



CTE AUTO SOUTHWEST VIEW



NATRONA COUNTY HIGH SCHOOL



SOUTH ELEVATION - AUTOMOTIVE SHOP TYPICAL MATERIALS

# MATERIAL SAMPLES



## FLOORING

- + Polished Concrete
- + Carpet
- + Resilient Flooring
- + Tile

## WALL FINISHES

- + Composite wood wainscot
- + Wood trim and paneling
- + Wall Coverings
- + Paint

## CEILING FINISHES

- + Acoustical tile
- + Acoustical baffles
- + Exposed structure paint

## EXTERIOR FINISHES

- + Brick
- + Terra Cotta

THANK YOU.